

**CARATTERISTICHE**  
SPECIFICATION

Hand driven spur gear winches.

- Safe and robust hoisting winch, in compliance with EN 13157.
- Static safety factor 4.
- Adjustable crank, with ergonomic plastic grip.
- Load pressure brake with double ratchet system.
- Maintenance free bearing.
- As standard grey RAL 7035 painted or zinc-plated finish. TL 1000 and TL 1500 stainless steel.
- Paint thickness 60-80 micron in 1 layer, according to DIN/ISO 12944, C1M.
- Operating temperature: -20°C / 40°C.

**OPTION**

- Atex certified
  - ⚡ II 3G Ex IIC T4 Gc, -20°C < Tamb < 70°C
  - ⚡ II 3D Ex IIIC T135°C Dc, -20°C < Tamb < 70°C.
- Two or more compartments (only TL 1000-1500).
- Free spooling option (for TL 1000 and TL 1500).

Argani manuali con riduttore a ingranaggi.

- Costruzione robusta e sicura, in accordo a EN 13157.
- Coefficiente di sicurezza 4.
- Leva di comando regolabile, con impugnatura ergonomica in gomma.
- Freno a pressione di carico con doppio saltarello di sicurezza.
- Cuscinetti lubrificati a vita.
- Disponibili di serie verniciati grigio RAL 7035 o zincati. TL 1000 e TL 1500 disponibili in acciaio inossidabile.
- Verniciatura con spessore 60-80 micron in 1 strato in accordo a DIN/ISO 12944, C1M.
- Temperatura di lavoro: -20°C / 40°C.

**SU RICHIESTA**

- Versione Atex ⚡ II 3G Ex IIC T4 Gc, -20°C < Tamb < 70°C
- ⚡ II 3D Ex IIIC T135°C Dc, -20°C < Tamb < 70°C
- Due o più compartimenti fune (solo TL 1000- 1500).
- Dispositivo per lo scorrimento libero della fune (per TL 1000 e TL 1500).

TL 150



TL 300 - TL 600



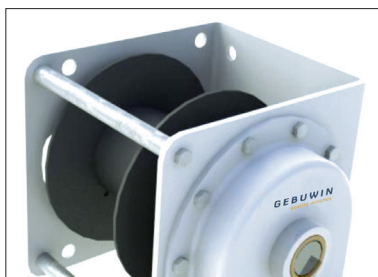
TL 1000 GR - TL 1500 GR



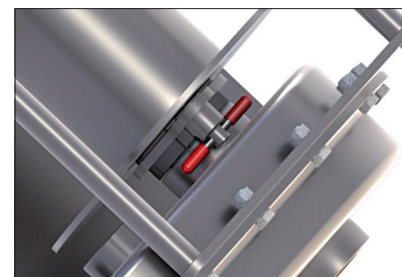
TL 1000 SS  
TL 1500 SS



Saltarello di sicurezza.  
Ratchet system.



TL 1000 - TL 1500  
Punti di fissaggio.  
Lashing system.



Dispositivo per scorrimento libero fune.  
Free spooling option.

### DATI TECNICI

TECHNICAL DATA

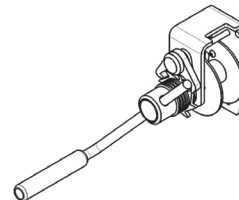
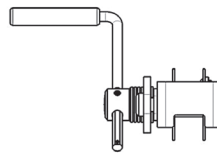
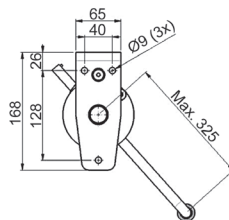
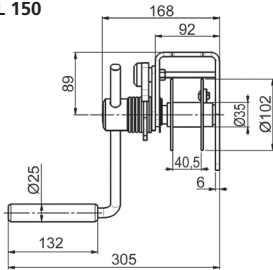
Tipo Type	Tipo Type	Tipo Type	Portata primo strato Capacity 1 <sup>st</sup> layer	Portata ultimo strato Capacity on top layer	Sforzo leva al 1° strato Crank force 1 <sup>st</sup> layer	Fune svolta ad ogni giro di leva Lift for crank revolution	Lunghezza massima della fune Rope capacity	Diametro fune Rope diameter	Carico di rottura min. della fune Rope MBL	Peso senza fune Weight without rope	Montaggio a muro con viti classe 8.8 Wall fastening with class 8.8 bolts
Verniciato Painted	Zincato Galvanized	Inox Stainless steel	kg	kg	daN	mm	m	mm	kN	kg	
TL 150GR	TL 150EV	-	150	67	10	122	13	4	9	4	3 x M8
TL 300GR	TL 300EV	-	300	172	6	32	35	4	9	10	4 x M8
TL 600GR	TL 600EV	-	600	336	10	28	12	6	17	11	4 x M8
TL 1000GR	TL 1000EV	TL 1000SST	1000	614	11	20	33	8	34	27	4 x M12
TL 1500GR	TL 1500EV	TL 1500SST	1500	927	12	14	21	10	51	28	4 x M12

### LUNGHEZZA FUNE E PORTATA AD OGNI STRATO

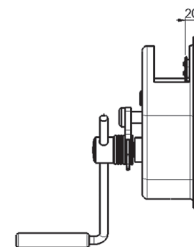
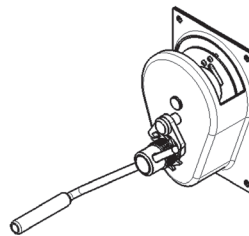
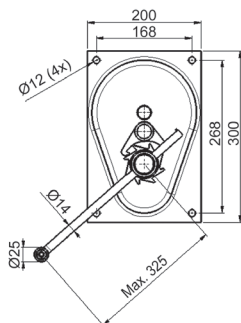
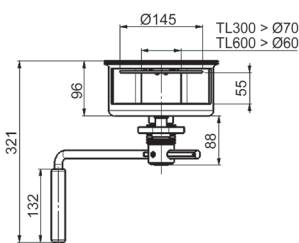
ROPE LENGTH AND WLL AT EVERY LAYER

Strati di fune Rope layers	TL150GR TL150EV		TL300GR TL300EV		TL600GR TL600EV		TL1000GR TL1000SS		TL1500GR TL1500SS	
	Lungh. Fune Rope length	Portata Capacity	Lungh. Fune Rope length	Portata Capacity	Lungh. Fune Rope length	Portata Capacity	Lungh. Fune Rope length	Portata Capacity	Lungh. Fune Rope length	Portata Capacity
	m	Kg	m	Kg	m	Kg	m	Kg	m	Kg
1	0,7	150	2,3	300	1,0	600	3,5	1000	2,5	1500
2	1,9	127	5,4	274	2,7	518	8,1	888	6,1	1299
3	3,4	111	9,0	253	4,9	456	13,7	799	10,7	1146
4	4,9	98	12,5	234	7,0	408	19,5	726	15,4	1025
5	6,8	88	16,7	218	9,7	368	26,2	665	21,0	927
6	8,6	79	20,8	204	12,3	336	33,0	614		
7	10,9	73	25,5	192						
8	13,1	67	30,1	181						
9			35,4	172						

#### TL 150



#### TL 300 - TL 600



#### TL 1000 - TL 1500

